

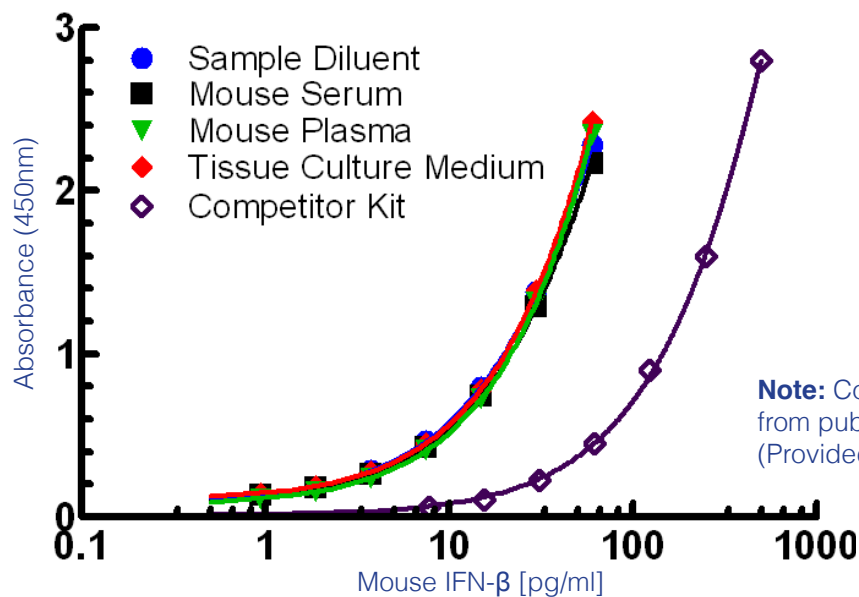


# VeriKine-HS Mouse Interferon Beta Serum ELISA Kit

Catalog No. 42410

- The **world's most sensitive** Mouse IFN Beta ELISA
- Quantifies low level mouse IFN- $\beta$  in **serum, plasma** and tissue culture media with an assay range of **0.94 - 60 pg/ml**
- Reliable serum and plasma spike recoveries of >90%
- Provides reproducible results with <10% CV
- Total assay time of **~ 2 hours**

**Figure 1.** Standard Curve



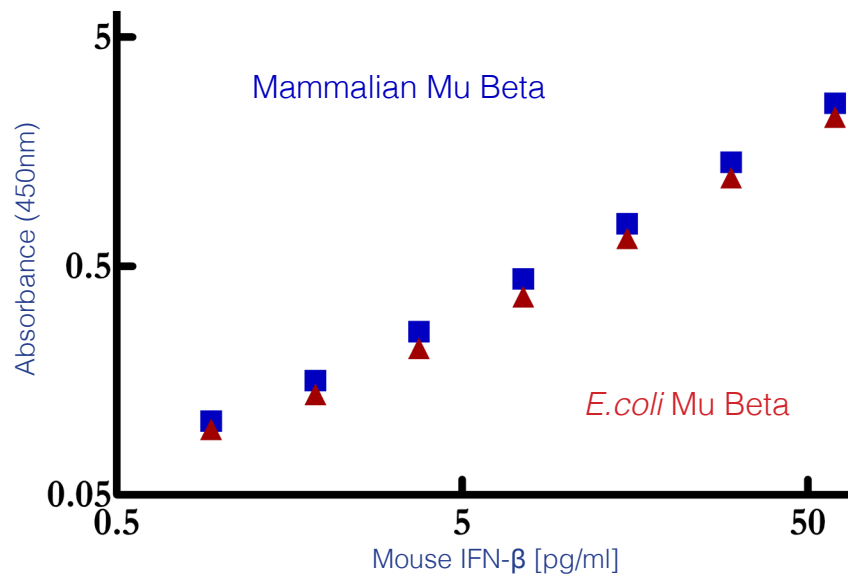
**Note:** Competitor data obtained from published public source. (Provided for comparison use only).

PBL's 96-well ELISA kit will equip you with the most sensitive and consistent tool for accurately measuring Mouse IFN- $\beta$  in serum and plasma matrices. Purified, recombinant mouse IFN- $\beta$  expressed in mammalian cells is provided as the standard. The sensitivity provided by this kit will advance your mouse studies and help uncover insights into the pathology of diseases.

**Figure 2.** Precision and Recovery in CD-1 Mouse Serum

Concentration	2.5 pg/ml	10 pg/ml	50 pg/ml
Intra-Assay CV (n=24)	5.7%	5.5%	5.5%
Inter-Assay CV (n=9)	8.3%	6.3%	4.8%
Average Recovery (n=27)	98%	92%	94%

**Figure 3.** Comparison of ELISA Reactivity of Mammalian & *E.coli* Expressed Mu IFN- $\beta$



The versatility of mouse models lends their use in a number of disease and auto-immunity studies. Interferon  $\beta$  plays a pivotal role in the protective response to many infections and diseases due to its antiviral, anti-proliferative, anti-inflammatory and immune-modulatory activities, and is an important early product of TLR/RLR stimulation.

### Product Information

Catalog Number	42410-1, -2
Description	VeriKine-HS Mouse Interferon Beta Serum ELISA
Size	1 x 96-well plate, 5 x 96-well plate
Compatibility	Serum, Plasma, Tissue Culture Media
Assay Range	0.94 - 60 pg/ml